



High Wycombe Community Board agenda

Date: Tuesday 25 April 2023

Time: 6.30 pm

Venue:

Membership:

A Hussain (Chairman), A Alam, M Angell, M Ayub, S Barrett, K Bates, A Baughan, L Clarke OBE, T Green, S Guy, D Hayday, O Hayday, I Hussain, M Hussain JP, Majid Hussain, Maz Hussain, M Knight, S Raja, N Rana, M Smith, N Thomas, P Turner, J Wassell and K Wood

Agenda Item	Time	Page No
5 BUCKS FIRE AND RESCUE – presentation – GC Stuart Grosse (Stuart Grosse, Group Commander Response South, Bucks Fire & Rescue) BFRS summer pressures 2022 National Fire Chiefs Council 2023 Campaigns Local Community Campaigns		3 - 22
6 THAMES VALLEY POLICE UPDATE – presentation – Acting Inspector Daniel Crook and Anisa Shaikh, Community and Diversity Officer (presentation attached to the notes) (Acting Inspector Daniel Crook, Thames Valley Police) (Anisa Shaikh, Community and Diversity Officer)		23 - 32
7 TOWN CENTRE AND STREET WARDENS UPDATE – presentation – Nick Adkins – Community Safety, Buckinghamshire Council (presentation attached to the notes) Nick Adkins, Community Safety, Buckinghamshire Council		33 - 48

10 FORMAL COMMUNITY BOARD UPDATES – Fay Ewing – Community Board Manager, High Wycombe **49 - 54**

An update to be given by the Community Board Manager including:

Funding Report

12 CORPORATE UPDATE **55 - 60**
(Matthew Everitt, Service Director – Service Improvement)

If you would like to attend a meeting, but need extra help to do so, for example because of a disability, please contact us as early as possible, so that we can try to put the right support in place.

For further information please contact: Iram Malik on , email hwcb@buckinghamshire.gov.uk.



Buckinghamshire
Fire & Rescue Service

Fire & Rescue Service updates

High Wycombe Community Board



Agenda

POINTS OF DISCUSSION

01 Our organisation

02 Community safety initiatives

03 Summer pressures 2022

04 New challenges



Our organisation



Buckinghamshire & Milton Keynes Fire Authority



How is the Authority made up

- 5 councillors from Milton Keynes council
- 12 councillors from Buckinghamshire Council
- 11 conservative, 3 Labour, 3 Liberal Democrat



Simon Rouse
Chair of the Fire Authority



Buckinghamshire Fire & Rescue Service

Page 7

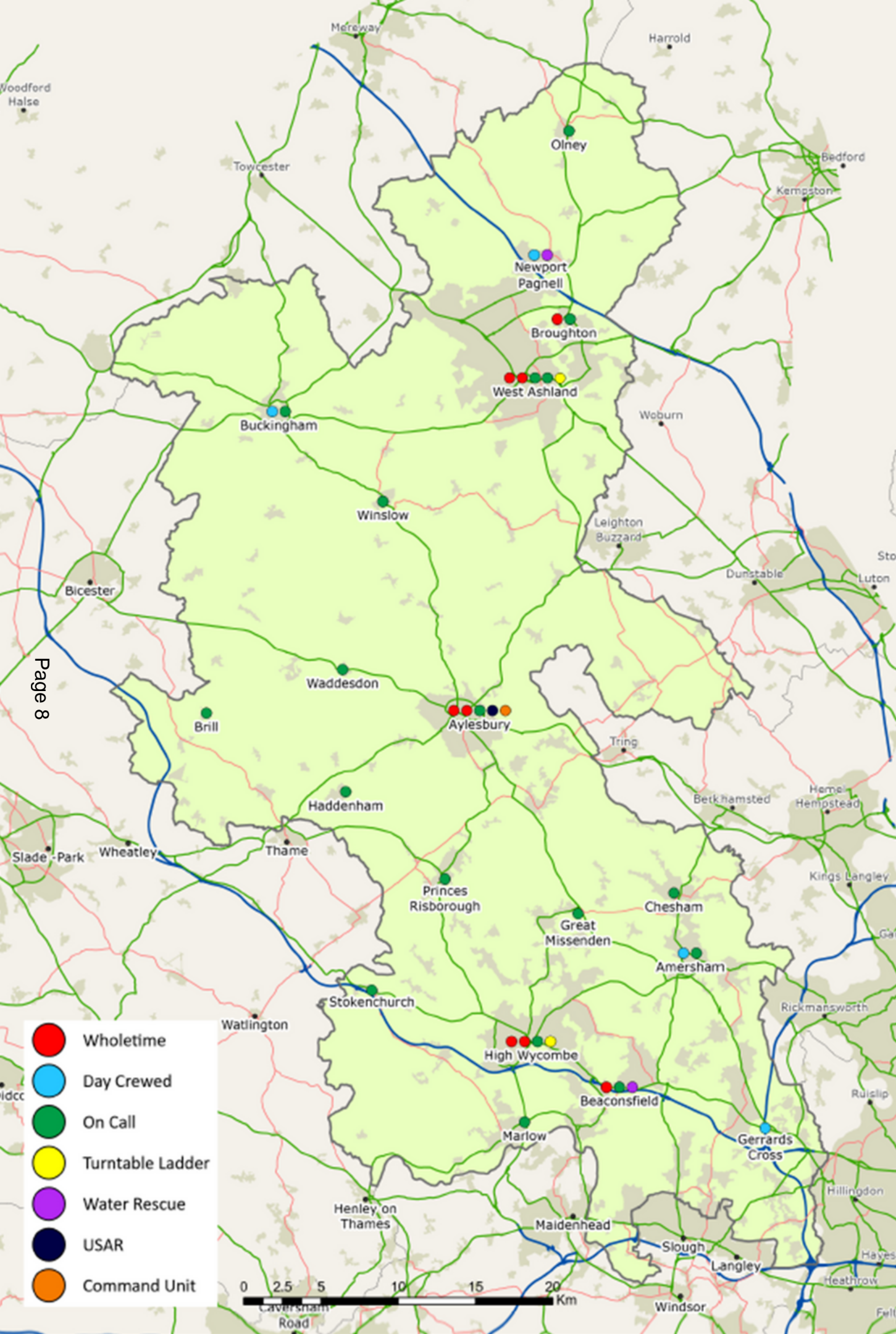
Our people

- 300 Wholetime (full time) Operational staff
- 96 On-Call (part time contracted) Operational staff
- 126 support staff



Jason Thelwell
Chief Fire Officer



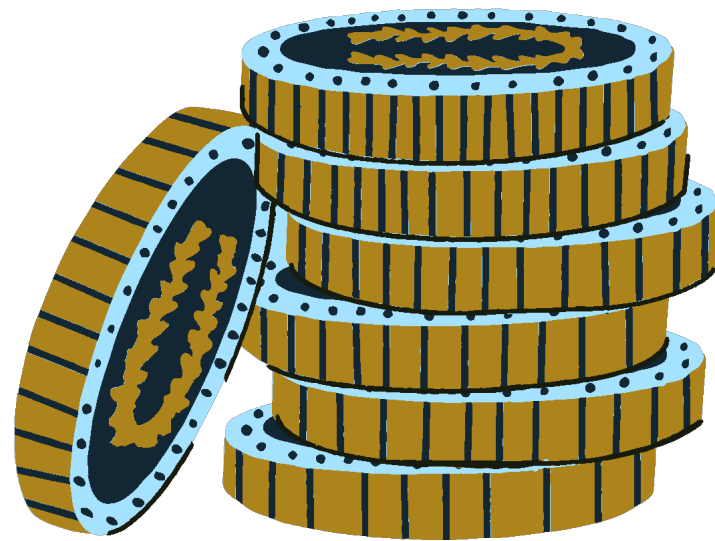


Our Fire Stations

- 9 Wholetime stations, 7 of which have On-Call units
- 10 stand alone On-Call stations
- 30 Fire Appliances
- 10 specialist appliances
- 5 Urban Search and Rescue Modules



Our finances



SOURCE	£ M
Business Rates and Revenue support Grant	£9,389
Specific Grants	£1,110
Council Tax	£22,981
Total	£33,480 Million



Community safety initiatives



Our vision

To ensure Buckinghamshire and Milton Keynes are the safest places in England in which to live, work and travel.



OUR FOUR COMMUNITY SAFETY PRIORITIES



SAFER HOMES



SAFER NEIGHBOURHOODS



SAFER ROADS



SAFER ENVIROMENT

The community safety priorities under pin, what we call internally, our Prevention Strategy which has been rewritten for 2022.



High Wycombe Service Delivery Area



Better Understanding the Local Community, Risk and Incident Trends

This document is designed to assist all staff to understand the local community and environment within High Wycombe Service Delivery Area. This report includes information about demographics, the built environment and fire service specific risks within High Wycombe Service Delivery Area.

This document is an introduction into the local demands and challenges which are specific to High Wycombe Service Delivery Area and should be a building block to inform the development of High Wycombe station plans and activities.

Service delivery areas

Community Prevention is divided into Service Delivery Areas with a wholetime station at its core

High Wycombe Community Board area is centered on the **High Wycombe Service** delivery area

- Wholetime Station- High Wycombe Fire Station
- Station Commanders Andrew Holtzhausen



Beaconsfield and High Wycombe service delivery area

Community safety priorities

Safer Homes

Reduction in accidental dwelling fires

Fire safety in the home

Outlying village Reach out



Safer Environments

Unattended bonfires

Reduction in Deliberate fires

Reduction in secondary



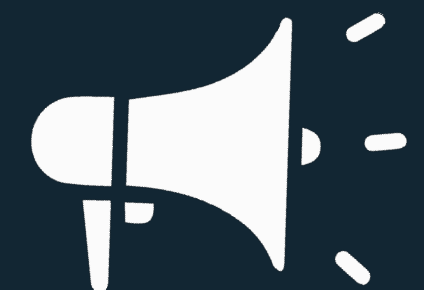
Road safety



Safer Neighbourhoods

Blue Light day

Community engagement



Summer pressures 2022

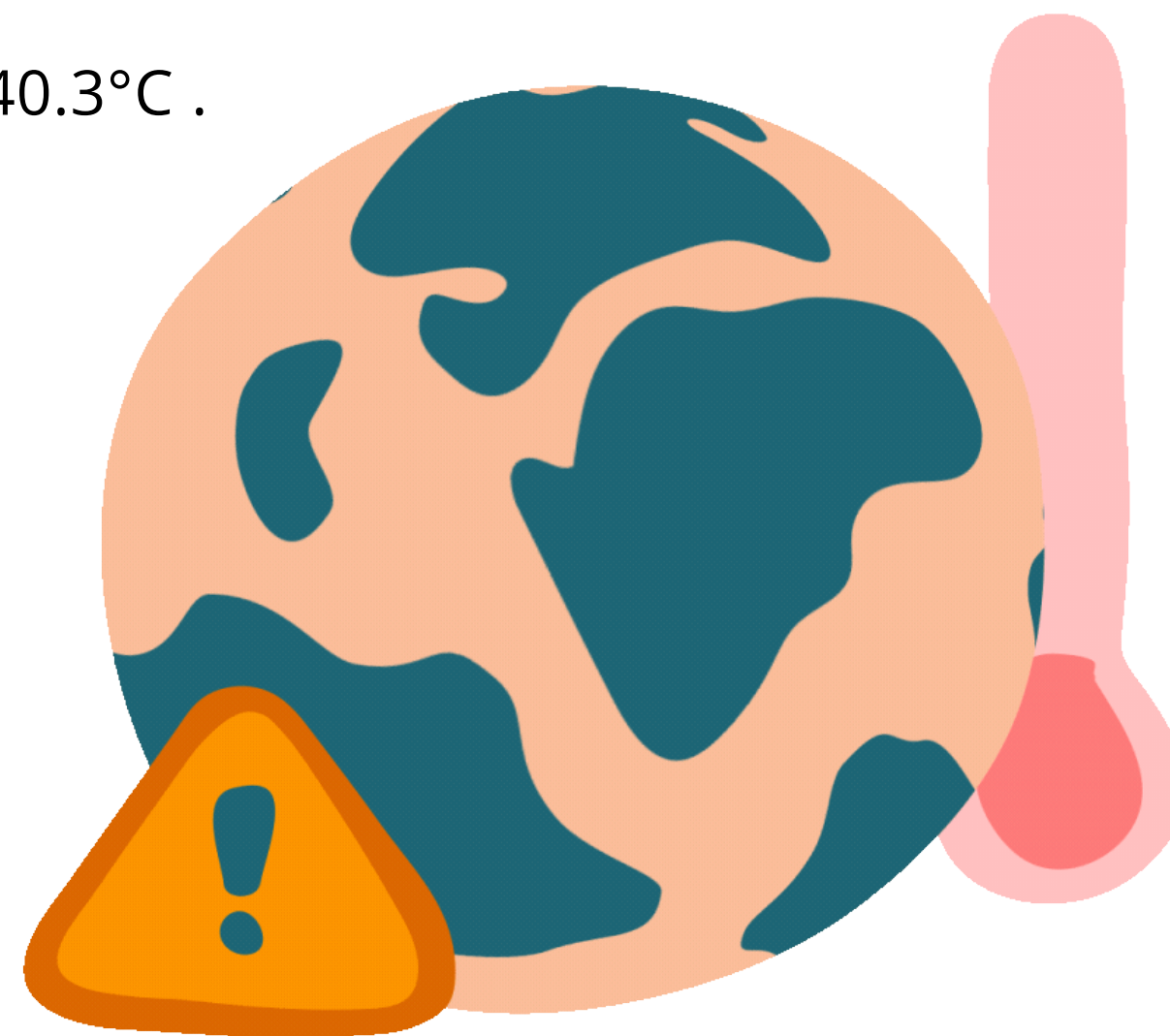


Record temperatures

The months of July (16 - 19) and August (9 - 15) 2022, brought record high temperatures and dry weather that presented many challenges for Fire and Rescue Services (FRSs) and other emergency responders across the country.

The Met office issued its first red warning for heat affecting central and south England, which was in place for 18 & 19 July.

On the 19 July the UK recorded its highest ever temperature of 40.3°C .



Major Incidents declared

By Buckinghamshire Fire & Rescue

On Tuesday 19 July two major incidents were declared, one in the north of the county at 13:05

- Kiddi Caru Nursey Walnut Tree Milton Keynes

One in the south of the county at 14:37. Whitehouse Farm,

- Wooburn Moor, High Wycombe

In the following three hours, BFRS supported by neighbouring FRS's were also mobilised to large scale, protracted incidents at Chearsley, Buckland and Denham resulting in resources being exceptionally stretched.



Service Wide Major Incident

Servicing five major fires across our area, two of which were declared major incidents from the scene of operations, triggering the declaration of a Service wide major incident, supported by the Thames Valley Local Resilience Forum (TV LRF).

BFRS were ably assisted by many of our neighbouring Services including Oxfordshire, Northamptonshire, Bedfordshire, Royal Berkshire, Hertfordshire and a specialist water carrier from Dorset and Wiltshire, despite them all being under operational pressures themselves.



**MAJOR
INCIDENT**

Calls taken by Thames Valley Fire Control Service (only) for incidents in Bucks

Major incidents were declared by fifteen FRSs across the country including neighbouring services in London, Bedfordshire and Hertfordshire, as a result of the devastating outbreak of fires.

The Service attended an unprecedented number of calls, including many fires in the open / wildfires.

BFRS has debriefed, reviewed and collated the information from this period to improve our service delivery and staff welfare at future events.

DATE	Prev five-year average	2022	Increase %
16-Jul	48	180	%
17-Jul	48	78	64%
18-Jul	64	85	34%
19-Jul	41	220	439%
09-Aug	45	108	139%
10-Aug	40	75	89%
11-Aug	49	108	121%
12-Aug	44	157	258%
13-Aug	50	106	111%
14-Aug	45	96	115%
15-Aug	41	84	105%



New Challenges



Horizon scanning

- HS2 – the second longest tunnel in the UK will be beneath the Chiltern Hills
- Climate change-hotter summers, wetter winters
- Development within Buckinghamshire and Milton Keynes
- Fire Reform White Paper





QUESTIONS





Wycombe Neighbourhood Engagement Team

Team News

The Wycombe Neighbourhood Engagement Team is lead by Inspector 5159 Stephen Bobbett and Sergeant 3675 Darren Walsh who supervise three teams:

West Sector (Includes Downley, Sands, Castlefield and Booker).

PC 5557 James Carey, PC 5526 Joe Voight and PCSO 9433 Ceri Elliot.

East Sector (Includes Terriers, Totteridge, Micklefield and Wycombe Marsh.

PC 5925 Nick Eva and PCSO 7847 Artura Ramuckas.

South Sector (Includes the Town Centre, Dawes Hill and Cressex).

PC 7047 Harry Prasol, PC 5488 Jack Jones, PC 4869 Cameron Eliot and PCSO 9850 Alice Waite.

There are a number of abstractions from the team, to cover our 999 response teams, whilst the police uplift is in progress. PS Dan Crook has been temporarily promoted to Inspector on the Problem Solving Team and has been replaced by PS Walsh from Amersham. We will also be getting a new PCSO in April to increase our numbers.

Quarterly Reports, Community Boards and the Policing Issues Panel

In line with the Community Boards, we will prepare a quarterly report on key issues which the Neighbourhood Teams have been working on. Wycombe's Community Boards will discuss and recommend, what they feel your NHPT should be prioritising. This period we focused on:

- 1) **Serious Acquisitive Crime**
- 2) **Anti-Social Behaviour**
- 3) **Drugs**

Newsletters and various minutes can be found at <https://www.csb-forum.org/about> This is an excellent site set up by members of the community and offers a wealth of knowledge on various policing issues. For statistics of crimes in your area please visit www.police.uk

In this quarterly report, I have included updates, from NHP and our Priority Crime and Stronghold teams, to give you a clearer picture of what is taking place and what we are doing.

Priority 1: Serious Acquisitive Crime

Residential Dwelling Burglary: When compared to the same period last year April 2021 – March 2022 we see an overall increase of 43%. Whilst this is a big increase, it is reflected to a degree across the force and numbers are still slightly lower than we saw pre-COVID. When compared to the previous quarter, [Sept – Dec 2022], we see an overall decrease this quarter of -32.4 %

Offences surrounding residential burglary differ greatly in the areas of Wycombe to that of the Amersham area. Wycombe and surrounding areas do tend to have more habitual 'localised' criminals whereas in areas to the east of the LPA, cross border offenders are the main issue.

In the previous quarter, we saw a significant spike in cross border offending particularly in offences which involved the smashing of rear patio windows and where offenders search for items of jewellery. These offences generally took place between 2pm and 8pm and it is believed these were due to 'cross-border' offenders travelling into the LPA using stolen/cloned motor vehicles generally originating from Herts/London/Surrey. These offences continued through January but we have seen a marked drop off in these offences through February and into March.

We have also had a linked investigation with Metpol into a team of young offenders who steal vehicles in burglaries, which are then used in further burglaries. These offenders will also steal cash and jewellery whilst inside the property and steal number plates and commit bilking's across numerous force areas. We expect resolution shortly into this investigation and are hopeful of some successful outcomes. The east of the LPA in particular has suffered greatly since August 2022 with cross border offending and it is a welcome relief to have some respite at present, reflected in the decrease this quarter.

In response to these offences we have, Dog and Firearm unit patrols supplementing, local officers' taskings to the areas with the highest offending. We also utilise a dedicated burglary patrol vehicle at relevant times where available and are engaged with the mounted section to provide reassurance to those communities hit hardest. The Rural Crime Taskforce will also assist when available. We have had 23 successful outcomes in respect of residential burglary since April 1st, and 4 in this quarter. The detection rate is currently 3%. The following tables reflect the change in offences recorded on the Wycombe areas for this quarter compared to the last and for the year to date compared to last;

QUARTER	Jan 2023- to date	Sept – Dec 2022	+ / -
Chepping Wye	8	11	-27%
Marlow	28	12	+133%
Marlow South	5	7	-28%
Risborough	9	4	+125%
Wycombe East	10	15	-33%
Wycombe West	18	21	-14%
Wycombe South	10	20	-50%

88 offences this quarter compared to 90 last quarter= -2.2%

QUARTER	April 2022 - to date	April 2021 – March 2022	+ / -
Chepping Wye	30	22	+36%
Marlow	46	28	+85%
Marlow South	18	21	-16%
Risborough	22	23	-4%
Wycombe East	39	39	0
Wycombe West	61	55	+10%

Wycombe South	51	52	-1.9%
---------------	----	----	-------

267 offences this year to date compared to 240 last year = +11.25%

Business burglary: 22 detections since April 1st, 1 this quarter with a detection rate of 9%

QUARTER	Jan 2023- to date	Sept – Dec 2022	+ / -
Chepping Wye	0	3	-100%
Marlow	5	10	-50%
Marlow South	0	6	-100%
Risborough	2	4	-50%
Wycombe East	3	1	+200%
Wycombe West	6	12	-50%
Wycombe South	13	20	-35%

29 offences this quarter compared to 56 last quarter = -48%

QUARTER	April 2022 - to date	April 2021 – March 2022	+ / -
Chepping Wye	5	6	-16%
Marlow	21	17	+2%
Marlow South	9	16	-43%
Risborough	12	22	-45%
Wycombe East	5	4	+25%
Wycombe West	27	35	-22%
Wycombe South	58	28	+107%

137 offences this year to date compared to 128 last year = +7%

Theft of motor vehicle (includes Taking without Consent / Aggravated vehicle taking): 194 vehicles stolen across the LPA between Sept – Dec 2022. This quarter has seen 138 stolen to date – a reduction to date of 28%.

When comparing the year to date figure [536] to the 2021-22 end figure [537] we are bound to see an overall % increase come March 31st.

We have 21 outcomes since April 1st 2022, 0 in this quarter and a detection rate of 4%

QUARTER	Jan 2023- to date	Sept – Dec 2022	+ / -
Chepping Wye	9	14	-35%
Marlow	16	13	+23%
Marlow South	4	4	0
Risborough	4	6	+33%
Wycombe East	14	15	-6%
Wycombe West	15	17	-11%
Wycombe South	13	26	-50%

75 offences this quarter compared to 95 last quarter = -21%

QUARTER	April 2022 - to date	April 2021 – March 2022	+ / -
Chepping Wye	34	31	+21%
Marlow	46	45	+2%
Marlow South	13	17	-23%
Risborough	21	17	+23%
Wycombe East	48	47	+2%

Wycombe West	54	60	-10%
Wycombe South	61	35	+42%

277 offences this year to date compared to 252 last year = +9%

Personal robbery: Personal robbery [including assault w/l to rob] number 111 since April 1st. For the same period last year, the figure was 93, seeing an overall increase of 19%. Whilst numbers are slightly up for the year, we are well placed within TVP with only two other LPA's seeing less of an increase.

Comparing this quarterly figure to the previous quarter, we see an overall decrease of -59 %.

When comparing the year to date figure [111] to the 2021-22 end figure [99] we see an overall increase of -12 %.

We have 10 detections in respect of Robbery – personal since April 1st and 2 in this quarter giving a detection rate of 9%

QUARTER	Jan 2023- to date	Sept – Dec 2022	+ / -
Chepping Wye	1	3	-66%
Marlow	0	3	-300%
Marlow South	2	0	+200%
Risborough	0	1	+100%
Wycombe East	2	6	-66%
Wycombe West	2	10	-80%
Wycombe South	6	8	-25%

13 offences this quarter compared to 31 last quarter = -58%

QUARTER	April 2022 - to date	April 2021 – March 2022	+ / -
Marlow	7	4	+75%
Marlow South	3	0	+300%
Risborough	2	3	+33%
Wycombe East	11	10	+10%
Wycombe West	18	22	-18%
Wycombe South	27	18	+50%

71 offences this year to date compared to 60 last year = +18%

We did: PCSO's have been visiting victims of burglaries and their neighbours to give out crime advice and identify if there are any witnesses. The team have also conducted a number of Pop up Police stations to give out advice on a range of matters (Future events listed below).

Proactively your NHT works with other departments (CID, ANPR, Proactive Roads Policing, Dog Units) and neighbouring Forces, in joint operations to disrupt criminals from entering our area. Utilising technology and analytical data, along with patrols, in marked and unmarked vehicles, we are able to target criminals as they use key roads into our area. These operations have yielded some fantastic results over the last year and have resulted in large numbers of arrests, people being reported for offences, drugs being intercepted from our area and vehicles being seized and taken off your roads. A joint operation on the M25 border resulted 179 people being arrested, 18 of which were in TVP. During the 71 stop checks that took place, ten vehicles were seized or recovered and 11 people were stop searched. By positioning resources in key locations we are able to cause huge disruption to the criminal gangs in the misery that they peddle.

For crime advice check out the following websites: www.thamesvalley.police.uk/cp/crime-prevention and ourwatch.org.uk/betterplacetolive.

Priority 2: Anti-social Behaviour (ASB)

We did: Anti-social behaviour disputes between neighbours can be a huge demand on the police. The team are frequently the first port of call for civil issues such as noise disturbances, boundary disputes, parking issues, and cannabis and drug use. Your Neighbourhood Team will put in place problem solving solutions for protracted cases; frequently cases involve people with mental health or learning difficulties; wrought with complexity and challenging to resolve. We work with partnership agencies to put in place support for those with mental health problems and safeguard them.

Key areas of interest. Following Easton Street Car Park closing due to the behaviour of a number of rough sleepers, which included using the stairwells as toilets, drug use and littering including drug needles. We have put in place a problem-solving package. This behaviour is unacceptable and we are working with the council in identifying those involved and are collating evidence to see if individuals can be brought to justice. Our investigation has found failings in damage not being reported leading to evidential opportunities being lost. The delay in repairing damage is likely to lead to further copycat behaviour occurring. We are working with Homeless Connections, Buckinghamshire Council and other partners to improve how we deal with the problem in the town centre which includes drugs use, thefts, aggressive street begging and criminal damage.

There have been a number of instances of aggressive begging taking place with vulnerable people being targeted leading to people feeling obliged to go to cash machines to give them donations. Frequently the beggars are claiming to have nowhere to stay when a number of them are in accommodation. We have worked with the Councils Street Wardens and we are collating evidence against those who are breaking laws. A day of action in February led to four beggars being given advice about support and warned that they were breaking laws and if the behaviour continues, we would seek to obtain Community Protection Notices and Criminal Behaviour Orders to protect the public. Homeless Connections and a number of partner agency groups are doing some great work in trying to help people who are homeless. We are looking at ways to discourage the public from giving money directly to individuals as often that money is used to enable drug use.

The riverside near the Marsh Retail Park has also had its problems with littering and Class A drug use. One resident found over 70 needles, clothing and a sleeping bag. This is a risk especially to children who may inadvertently adventure into this area and to our wildlife. No one wants to bump into a minx with a habit. We will be looking at what can be done to stop this behaviour, with our partners, and looking to focus on the route problem drugs.

There have been a number of complaints about traffic issues in Castlefield. This includes speeding and parking. I am aware that a joint working group has been looking at a range of options to improve that area. This has to start with the community itself, engaging and wanting change, challenging in a safe way people over their habits. The housing provider will review the discarded rubbish whilst Buckinghamshire Council are looking at what viable options there are in regards to the roads. The police will be looking to work with schools in educating the generation of tomorrow. We will also be looking at the causes of some of the problems and taking action, i.e. untaxed cars and reports of drugs. There has also been reports of fires on the land between Spearing Road and Mill End Road that we are looking into.

The Team have assisted in the successful possession order applications on two properties recently.

The repossession at Eaton Place came after a considerable amount of work by PC Eva, Harrow Churches Housing Association and Homeless Connections, and was in response to a resident committing repeated anti-social behaviour, drug use and drug dealing. A closure order was sought initially, before the successful possession order solved the problem permanently. Neighbours were being affected by the behaviour, and this intervention not only led to decreased disruption to them but also lower demand on the police.

Repossession at Cheviot Close was similarly successful after collaboration between the team and Red Kite Housing. The offender was evicted from the property after causing months of misery to her neighbours, and months of heavy demand on the police. A possession order successfully mitigated this misery and demand.

PCs and PCSOs have been completing presentations, at schools and youth clubs, on what we do and how we keep people safe. The Hannah Ball School, was visited, in February to speak to Years 5 and 6 about making good decisions.

Other accomplishments have been the successful prosecution and incarceration of several regular shoplifters who had been causing chaos to our retail outlets.

Priority 3: Drugs

Your Neighbourhood Team has been working with other departments on this issue. Persons who have been identified as being vulnerable, being taken advantage of, or possibly cuckooed, will receive visits by uniformed officers and be safeguarded when necessary. We will make neighbours aware of our concerns and give out leaflets of what to look for. If we raise awareness, we'll receive information that can be turned to evidence. When we have evidence, we can then look at closure orders to protect our communities.

The Stronghold Team will relentlessly identify, pursue, investigate and disrupt some of our most challenging Organised Crime Groups and drug lines including those who target vulnerable people and exploit children.

During February and March your Stronghold Team, NHPT and other departments took part in a concentrated week of action focusing on organised crime groups that are blighting our neighbourhoods. During one week, 10 warrants were executed in Wycombe. This led to approximately £30,000 being seized, over 60 grams of class A being seized (street value between £6285-£8000, 13 people being arrested, charged and remanded. At court 9 of 13 were further remanded in prison awaiting their trials whilst the other 4 were bailed with strict bail conditions. Forty charges were authorised by CPS. This will have a massive impact on the drug market.

Detective Inspector Peter Wall who leads on serious and organised crime in South Bucks LPA said "Myself and my team maximise every opportunity to dismantle and disrupt organised criminality in whatever form it may take. The last year has seen some significant results that will have a long term impact in keeping our communities safe but we remain vigilant and with the support of the community we will continue to prosecute those responsible"

Have Your Say meetings

We will be running Have Your Say (HYS) meetings and giving crime prevention advice:

22/3/23 Havenfield Road Sheltered Accommodation for 22/03/23 at 1030 hours.

C9433 Elliot
C9850 Waite
C7847 Ramuckas

18/4/23 Location to be confirmed
C9850 Waite
C7847 Ramuckas

Locations and timings to be confirmed and will be advertised on the www.csb-forum.org and on Social Media Platforms. Please be advised that officers may be required operationally and these events could be cancelled with late notice.



Thames Valley has many diverse communities. In recognition of this, Thames Valley Police have decided to adopt the national plan but have amended it's focus to encompass all ethnic minority communities. PS Walsh has conducted meetings in Cressex, Castlefield, Buckinghamshire University and at the council seeking the communities views. Detailed information on how to participate is available on [our Race Action Plan page](#). Please encourage your family, friends, and local communities to take part as well. Consultation closes on 26th March 2023.

Fraud



Fraud is the most common crime and can have a life changing impact on victims of this type of crime even shortening the lifespan in a significant number of cases with the elderly. Surprisingly figures show the most likely age group to be scammed are those aged between 20 - 39 years.

Did you know that your local PCSO's contact **all** victims of fraud to offer suitable advice and support. This may include a visit to the most vulnerable and we will assist in getting support for those where banks have not carried out checks with due diligence. We also offer call blockers to the most vulnerable.

In the right circumstances, anyone can be caught out. I personally received a text from one of my adult children saying "Dad I have changed my number please save this and delete my old number". When the texts came asking for money (Nothing unusual there) but for a boiler (Which made no sense) I realised that I was the victim of an attempted fraud. Now you may be confident that you would not be tricked, but would your parents or children get caught out. Please promote the

message 'Take FIVE' and if you get a strange call, text or e-mail take 5 minutes to think. These fraudsters take their business very serious and their tricks are ever evolving.

Speeding in Wycombe

If you are concerned about the speeds in your area and want to make a stand. You can become a member of your local Speedwatch group or even start your own group. Find out more at <https://www.communityspeedwatch.org> The PCC, Matt Barber has secured funding, enabling short-term loan start-up kits for new areas for equipment. This will allow teams in the TVP area to get started as soon as possible.

I am trying to raise interest in starting such a scheme in Castlefield for the reports of speeding problems there. If you are interested please let me know.

Our Road Safety vans and fixed cameras provide enforcement and a visual deterrent across the area. Their aim is to help support you to reduce the speed of traffic, making the roads safer for all road users, and reduce the risk of injury, collisions and casualties in your district. Figures from the Road Safety Mobile and Speed Enforcement Team advised that the following amount of tickets were issued.

November: Mobile locations; 1543 Fixed site; 498

December: Mobile locations; 543 Fixed sites; 568

January: Mobile locations; 1058 Fixed sites; 731

Offenders Brought to Justice

Offences from the 1st Dec 2023(at time of writing 03/03/23). This does not include persons who are currently under investigation.

Wycombe East

Person charged with breaching CBO.

Person charged with breaching a restraining order.

Assault police; One person charged, one given a caution and one an ARD.

Assaults with injury; One person given a conditional caution, 1 YRD and 5 ARD's.

Assaults without injury; One person charged, 1 cautioned and one given an ARD.

Criminal damage; One person charged and one person given an ARD.

Coercive control; One person was charged.

Drugs; Four people given ARD's.

Malicious communications; One person was charged.

Proceeds of crime; One person was charged.

Possession of an offensive weapon; Three people were charged.

Public order; One person was charged.

Robbery; Two people were charged.

Theft from motor vehicle; Two people charged.

Wycombe South

Person charged with breaching CBO

Assault police; Two people charged and one given a caution.

Assaults with injury; One person given a conditional caution, 1 YRD and 5 ARD's.

Assaults without injury; Two people charged, 3 people given conditional cautions and 4 people given ARD's.

Business burglary; One person charged with 3 offences.

Residential burglary; One person charged.
Criminal damage; Two people charged and two people given community resolutions.
Dangerous dog; One person given ARD.
Drugs; Three people given ARD's. One person received a caution and another was charged.
Malicious communications; One person was charged.
Proceeds of crime; One person was charged.
Possession of an offensive weapon; Two people were charged.
Public order; One person charged. Two people given penalty notices and 4 people given ARD's.
Robbery; two people were charged.
Sexual assaults; One person was charged.
Shoplifting; Three people were charged.
Stalking; One person was charged.
Threats to kill; one person was charged

Wycombe West

Person charged with breaching a restraining order.
Assault police; Four people charged and one given a caution.
Assaults with injury; Two persons charged.
Assaults without injury; One person charged, one cautioned, one given an ARD's and one a YRD.
Coercive control; One person was charged.
Criminal damage; Two people charged, one given and two people given ARD's and one a YRD.
Drugs; One person charged, Seven people given ARD's, three people received cautions and one received a penalty notice.
False imprisonment; One person was charged.
Making off without payment; One person was given an ARD.
Malicious communications; One person received an ARD.
Possession of firearm; One person was charged.
Public order; One person was charged. Two people given penalty notices and 4 people given ARD's.
Sexual offences; One person given ARD for failing to comply with conditions of licence.
Shoplifting; Three people were charged and three people given ARD's.
Stalking; Three persons were charged.
Strangulation; One person was charged.
Threats to kill; One person was charged.


Social media

We ask our readers to consider subscribing to our Thames Valley Alerts, Facebook and Twitter accounts.



Sign up to Thames Valley Alerts to receive crime and policing updates directly from your local Neighbourhood Team as well as more crime and policing issues. Sign up to the service online at:

www.thamesvalleyalert.co.uk or speak with one of your Neighbourhood Policing Team.

Our “Twitter” feed TVP South Buckinghamshire  [@TVP South Buckinghamshire](https://twitter.com/TVP_South_Buckinghamshire) will show you what the policing team are doing, will provide crime prevention information, witness appeals and “Good Result” stories. The Facebook group: [TVP South Buckinghamshire](https://www.facebook.com/TVP_South_Buckinghamshire) will provide the same information as Twitter but seems to be the preferred social media site used by the public.

We do not take reports of crime via social media and we do not see comments placed into personal social media groups.

To report crime online visit <https://www.thamesvalley.police.uk/ro/report/>

Stay safe out there and keep your eyes peeled.

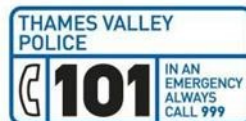
Sergeant Darren Walsh

Contact Us:



wycombeengagement@thamesvalley.police.uk

www.thamesvalley.police.uk



TELL US WHAT'S IMPORTANT TO YOUR AREA

We want to make sure that everyone in Buckinghamshire has the same opportunities to reach their potential and live happy, healthy lives.

Our Opportunity Bucks programme focuses on targeted areas within our main towns, Aylesbury, Chesham, and High Wycombe, and is working with people identified within these areas to improve those opportunities.

We want to understand what you like about where you live, what you'd like to see to make it even better, and how we can work together on local initiatives to improve:

- Education and youth engagement - giving everyone the chance to learn and develop
- Jobs, careers and skills - ensuring there is access to suitable employment
- Quality of public realm - transforming the place you live (including public spaces)
- Standard of living - reducing the number of people living in hardship
- Health and wellbeing - improving physical and mental health

Share your thoughts at
buckinghamshire.gov.uk/opportunity-bucks-survey



**Buckinghamshire
Council**

**OPPORTUNITY
BUCKS** | SUCCEEDING
FOR ALL



This page is intentionally left blank



OPPORTUNITY | SUCCEEDING
BUCKS | FOR ALL

TELL US WHAT YOU THINK...



Buckinghamshire
Council

This page is intentionally left blank

Notes from Kate Walker

Wycombe CB update – 25 April:

Ward partnerships – at a local level working with cllrs, partners, stakeholders and residents to identify key areas of focus, challenges and initiatives to improve opps for people who live in the wards

Action plans developed with ward councillors and some local stakeholders to address key challenges in the wards. Focus on top 3/4 priorities with a view to develop the action plan over the coming year with residents and the local community, reflecting feedback and taking on board local intelligence and insight.

Common themes:

- Access to health services, advice and information
- Community clean ups
- Improving use of open spaces – parks, playgrounds and common areas
- Support for vulnerable people – families in poverty, addressing social isolation for adults in supported living, early years support and new mums
- Community led initiatives to improve community cohesion
- Spaces for young people and youth engagement
- ASB priority for town centre as well as some specific local streets and local spaces

Some of the initiatives that are in development at the moment:

- Community café's in West Wycombe (Sands) – a talking café enhancing the offer at Hope Church as a great community asset; scoping mental health café
- Castlefield road safety project – £1million allocated to the Castlefield Project, to address the speeding issues (Rutland Avenue, the Middle Way, Spearing Road, Cross Road, Whitelands Road)
- Community clean ups – walkabouts taking photos and working with the quality of public realm theme on a programme for council and community clean up – abbey, castlefield, micklefield and open spaces like the melbourne rec
- Loneliness and isolation for adults living in sheltered accommodation e.g. lunch clubs to improve social interaction
- Community cohesion – local events and activities
- Working with themes on new initiatives like play streets, smokefree playgrounds

Community engagement

- meeting with local stakeholders, getting to know the areas, understanding what is already happening in the areas and scoping potential for new initiatives.
- Out and about in Feb and have a survey out now asking residents to tell us what they like about where they live but also what they'd like to see improved.
- Want to hold local workshops to delve deeper into these conversations with residents and partners in the wards.

Really appreciated the member engagement to drive this forward, and support from the CB too. Ask – promote the survey to help us gather views from local people and stakeholders.

SURVEY:

please help promote our survey to people in Wycombe - Share your views about where you live

Our [Opportunity Bucks programme](#) aims to improve opportunities for people living in the [10 areas](#) where people are experiencing most hardship in Buckinghamshire.

Please help spread the word about our Opportunity Bucks survey where we want to gather the views from people who live in these areas. We want to hear about what matters to them about where they live to help develop local action plans to improve opportunities for people in these key wards across Aylesbury, Wycombe and Chesham. Please share the below content with your local networks/members, contacts, family, friends and neighbours. If you have any questions please get in touch with us at communities@buckinghamshire.gov.uk

We want to hear from people living in High Wycombe, West Wycombe and Sands

We want to make sure that everyone in Buckinghamshire has the same opportunities to reach their potential and live happy, healthy lives. Our [Opportunity Bucks programme](#) is focusing on targeted areas within our main towns, Aylesbury, Chesham, and High Wycombe, and is working with people identified within these areas to improve those opportunities.

We want to understand:


1. what you like about where you live
2. what you'd like to see to make it even better
3. how we can work together on local initiatives to improve:
 - Education and youth engagement – giving everyone the chance to learn and develop
 - Jobs, careers, and skills – ensuring there is access to suitable employment
 - Quality of public realm – transforming the place you live (including public spaces)
 - Standard of living – reducing the number of people living in hardship
 - Health and wellbeing - improving physical and mental health

Share your thoughts by [completing the survey before midnight on Sunday 14 May](#).

Find out what areas we are focusing on and more about the Opportunity Bucks programme at www.buckinghamshire.gov.uk/opportunity-bucks

Social media post:

If you have social media please share using the following (see attached image for social media)

Do you live in Aylesbury, Chesham or High Wycombe?  Buckinghamshire Council wants to know:

1. what you like about where you live

2. what you'd like to see to make it even better
3. how we can work together on local initiatives to improve: education & youth engagement, jobs, careers & skills, quality of public spaces, standard of living and health & wellbeing.

Share your thoughts before midnight on Sunday 14 May 

www.buckinghamshire.gov.uk/opportunity-bucks-survey

This is part of our Opportunity Bucks programme which focuses on making sure everyone in Buckinghamshire has the same opportunities to reach their potential and live happy, healthy lives.

Find out more about Opportunity Bucks at www.buckinghamshire.gov.uk/opportunity-bucks

This page is intentionally left blank



OPPORTUNITY BUCKS – SUCCEEDING FOR ALL

A local response to Levelling Up

Wycombe Opportunity Bucks Action Plans

Community Focus lead: Kate Walker

Ward partnership officers: Natalie Judson (Terriers and Amersham Hill, West Wycombe),
Joanne Fowler (Ryemead and Micklefield, Booker Cressex and Castlefield, Abbey, Totteridge and Bowerdean)

Ward action plan development

The Wycombe Community Board ward partnerships have been working together to identify key stakeholders and key areas of focus for the next 12 months to develop their local action plans. The below plans outline their top priorities and ambitions for improving the place and opportunities for people who live in their ward. Alongside developing initiatives to address these priorities with local partners and communities, the ward partnerships will be carrying out engagement within their ward to further understand resident and partner views, strengths and challenges which will further inform the development of local initiatives and ward action plans.

Alongside the below priorities the ward partnerships will be instrumental supporting the roll out of theme initiatives such as play streets, play around the wards, smoke free-play grounds and community clean ups which support their ambition to improve community connections and improving the use of open/outdoor spaces.

Booker, Cressex and Castlefield

Ward Priority	Initiative & Purpose	Associated Theme
Improve road and pedestrian safety in Castlefield (Rutland Ave, Chiltern Ave, Spearing Road)	Engage with community working group to understand scope/work undertaken to date and support with solutions to improve road safety and review of traffic calming scheme.	Quality of Public Realm
Safe and suitable spaces for young people to meet	Work with local youth stakeholders to map existing youth provision and work together to raise awareness locally, identifying opportunities to improve and enhance youth offer.	Quality of Public Realm
Improve health and wellbeing and access to health information	Promote mobile health offers to improve community access to health checks and health and wellbeing advice. Identify gaps in provision linked to local health data and develop opportunities for the community to access health and wellbeing advice/sessions/health checks in the locality.	Health & Wellbeing

Ryemead and Micklefield

Ward Priority	Initiative & Purpose	Associated Theme
Improvements to play area and play opportunities	Upgrade and improve play area and equipment to enhance outdoor play opportunities for children, young people and families.	Quality of Public Realm
Suitable spaces for young people to meet and youth opportunities	Work with local youth stakeholders to map existing youth provision and work together to raise awareness locally and identify opportunities to improve and enhance youth offer.	Quality of Public Realm
Strengthening local assets	Develop and strengthen community assets and support opportunities to build community capacity via partnership working with Big Local.	Health & Wellbeing
Access to health information and advice	Improve access to health and wellbeing advice and support in the locality. To include potential campaign to improve recruitment of local people into local health professions to work in locality working with education, NHS and local Health Providers to recruit to fill gaps in provision.	Health & Wellbeing
Support for new mums	Work with partners providing programmes and activities to support new mums and identify ways to promote via GP's, health centres, schools and community venues to widen the reach and support for earlier intervention.	Health & Wellbeing

Abbey

Ward Priority	Initiative & Purpose	Associated Theme
Coordinate clean-up of litter (drug paraphernalia) and graffiti	Bring partners and existing resource together to make best use of resources to improve cleanliness of town centre and carparks - to maintain clean, safe and welcoming town centre and carparks. (Easton St, The Swan and Sainsburys). Look to develop initiatives in residential area (parking and litter)	Quality of Public Realm
ASB - Rough sleeping and substance misuse, street drinking and begging	Address issues of rough sleepers and drug use in carparks and across Abbey Ward, Coordinate agency support for those rough sleeping and drug taking/drinking in town centre carparks-targeted support for vulnerable individuals to help them with their addiction and secure accommodation.	Quality of Public Realm
Begging- support campaign to raise public awareness	Begging information campaign to raise public awareness of street begging and the support available to help people break the vicious cycle of begging. Reduce occurrence of begging in Abbey ward	Quality of Public Realm
Support for socially isolated families with young children	Explore opportunities to develop projects supporting 0–5-year-olds and their parents (post natal depression) and increase projects and offers of support for families with young children to create positive early years experiences for parents and children	

Totteridge and Bowerdean

Ward Priority	Initiative & Purpose	Associated Theme
Support for families living in poverty	Work in partnership to support parents and children living in poverty. Identify areas where most needed and initiatives that will help.	Standard of living
Portland House regeneration project and The NEXUS project St Andrews Church, HW	Work with the development of regeneration proposals supporting with community engagement. Ensure fit for purpose redevelopments to enhance quality of public realm, provide community cohesion opportunities, enhance community space and expand groups and activities to support the local community	Quality of Public Realm
Loneliness & isolation for residents in sheltered accommodation in Totteridge	Support and strengthen lunch clubs for the elderly and map existing provision and opportunities for social interaction in sheltered accommodation – increase membership where possible and strengthen the support and offer.	Health & Wellbeing

Terriers and Amersham Hill

Ward Priority	Initiative & Purpose	Associated Theme
Use of existing green spaces - Totteridge Recreation Ground	Enable and support healthy lifestyles through the provision of safe and accessible green spaces, sports facilities and layouts that encourage walking and cycling	Quality of Our Public Realm
Lack of suitable spaces for people to meet of all ages	Explore & promote assets in the locality which can provide the social, recreational and cultural facilities the community lacks	Quality of Our Public Realm
Community Get Together events /resident led initiatives	Providing opportunities which strengthen community cohesion and reduce social isolation e.g. play events, play street, street association	Health and Wellbeing

West Wycombe

Ward Priority	Initiative & Purpose	Associated Theme
Litter / drug paraphenalia (Booker Hill Rd, Mentmore close)	Enable and increase community clean up initiatives eg promote & bolster current volunteer pool for Sands Wombles	Quality of Public Realm
Increasing community cohesion	Understand connectedness within the community and carry out engagement with residents to explore ideas to improve relationships and a sense of community - building on existing assets and piloting resident led initiatives - focus primarily on Playstreets.	Health & Wellbeing
Mental Health community (Crisis) café	A one stop shop of support in a café setting with option of privacy rooms. Focus on MH & other areas associated with cost of living crisis. Cohort focus ethnic minority groups due to stigma often associated with asking for help	Health & Wellbeing, Standard of Living
Improve early years support and Health visitor access using the school (Millbrook Combined) as a hub	Re ignite the early years health checks and advice/ support at Stay & Play sessions. To enable early intervention and prevention.	Health & Wellbeing

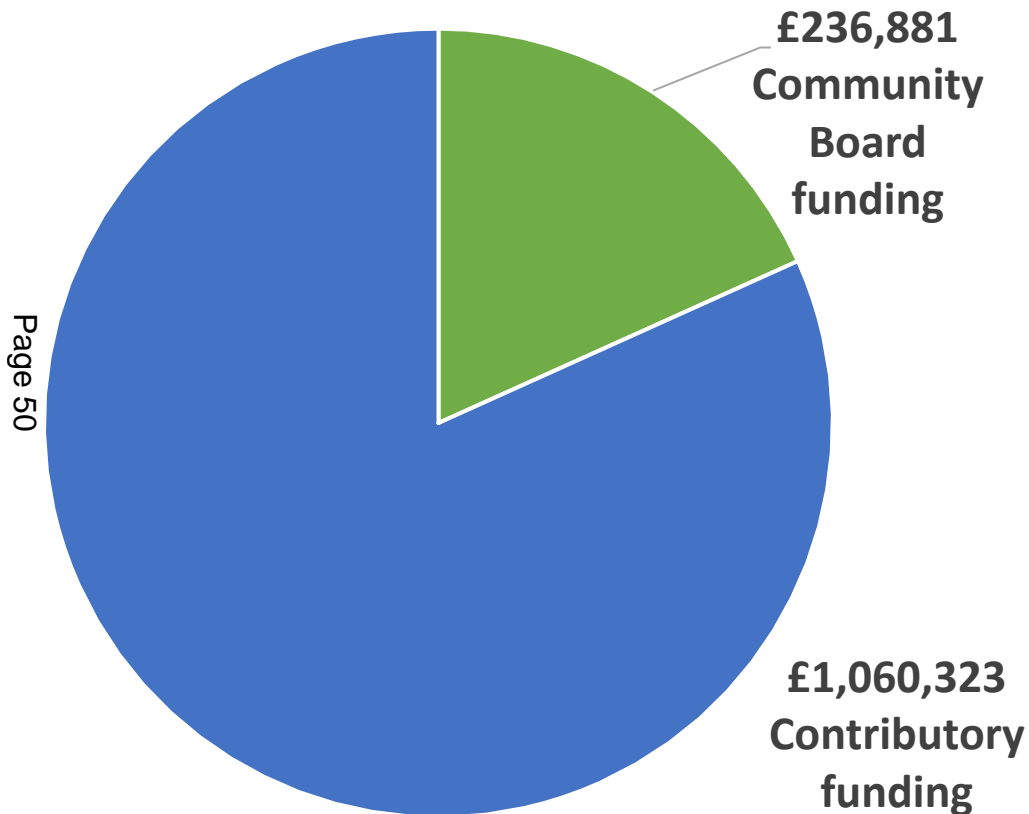


High Wycombe Community Board Funding update 2022/23

April 2023



High Wycombe Community Board 2022/23 budget



- Budget £237,853
- 4 Transport schemes
- 26 Community projects
- Total project value = £1,297,204

2023/24 Budgets

Community Board	Current Budget	2023/24 budget	Difference
Amersham	£89,696	£85,211	-£4,485
Aylesbury	£207,127	£196,771	-£10,356
Beaconsfield & CW	£111,704	£106,119	-£5,585
Beeches	£100,388	£95,369	-£5,019
Buckingham and Villages	£117,026	£111,175	-£5,851
Chesham and Villages	£111,128	£105,572	-£5,556
Denham GX & Chalfonts	£114,206	£108,496	-£5,710
Haddenham & Waddesdon	£138,639	£131,707	-£6,932
High Wycombe	£237,853	£225,960	-£11,893
Missendens	£77,604	£73,724	-£3,880
North West Chilterns	£125,177	£118,918	-£6,259
South West Chilterns	£122,528	£116,402	-£6,126
Wendover	£148,957	£141,509	-£7,448
Wexham and The Ivers	£90,475	£85,951	-£4,524
Wing and Ivinghoe	£99,040	£94,088	-£4,952
Winslow and Villages	£108,452	£103,029	-£5,423
	£2,000,000	£1,900,000	

This page is intentionally left blank



Community Board High Wycombe

Funding summary report High Wycombe Community Board 25th April 2023

This paper provides a summary of the funding applications received, considered, and approved since 1st April 2022.

Community Board Budget Overview

The table below details the current budget position for the High Wycombe Community Board.

Budget 22/23	Funding allocated	Remaining funding	Contributory funding
£237,853	£236,880.92	£972.08	£1,060,323

Funding Applications Status Summary

Funding applications received and approved by the High Wycombe Community Board.

Organisation	Project	Funding allocated
Wycombe Environment Centre	Refresh	£15,000.00
Wycombe Refugee Partnership	Hardship fund and Food Vouchers	£7,000.00
Wycombe Mind	Free Space	£8,900.00
SV2G	Our Commonwealth Queen Jubilee Crown	£4,860.00
Wycombe Friends of the Earth	Bee Squared	£2,000.00
High Wycombe Shopmobility	Scoot Further	£4,000.00
Hills Café	Regeneration Plan	£15,000.00
King's Church High Wycombe	Learning English Expansion Project	£6,000.00
Wycombe District Dementia	Comms tools	£774.80
Sports Inc	Run4Cover	£5,600.00
HW&DMRS	Back to Brunel	£7,450.00
Hillview	Bollard installation increase	£2,071.90
Kings Road War Memorial group	Unknown soldier silhouettes	£765.00
Babies 1st	Baby Bonding Group	£12,172.00
Community Board project	Hughenden Park Arboretum	£6,692.00
Community Board project	Care leavers support	£2,400.00
Wycombe Community Church Seventh Day Adventist	Fire escape	£15,000.00

All Saints Church	All Saints Churchyard: Remember, Refresh, Renew	£15,000.00
Cllr Paul Turner	Bellfield Road pedestrian crossing feasibility study	£6,094.00
Cllr Julia Wassell	Bowerdean Road traffic calming	£28,071.00
Cllr Paul Turner & Cllr Maz Hussain	Coates Lane traffic calming	£14,202.00
Cllr Julia Wassell	Kingston Road anti-social parking	£10,566.00
Wycombe Community Church Seventh Day Adventist	Welcoming Space	£985.00
Sands Wombles	Litter picking equipment	£977.82
St Andrews Church	Catalyst Youth Club	£4,000.00
HWBIDCo	Community payback	£7,000.00
HWBIDCo	Diverted giving	£5,861.40
St Andrews Church	New Kitchen Nexus Building Project	£15,000.00
High Wycombe Cricket Club	Community Outreach project	£10,000.00
Wycombe Youth Action	Follyfoot healing with horses	£3,438.00
Total approved		£236,880.92



An update for Community Boards from Buckinghamshire Council (Issue 2 2023 – May 2023)

Community Board and Highways Projects

Following the start of the new highways contract, the Community Boards will be following a new process when highways issues are raised to them.

The Community Boards will focus on right first-time solutions and explore community-based opportunities with collaboration from Community Board Managers, Local Community Liaison Team and the wider Buckinghamshire Council services to look for the most appropriate solution.

Relevant issues are to be raised to the Community Board predominantly via Town & Parish Councils using current ways of working where boards have a highways priority/where there is an action group in place.

Where the issue is appropriate to be dealt with through the Community Board, in the first instance the requestor will be signposted to a toolkit of non-engineered options which should be explored and implemented as a first opportunity for problem solving. This is an opportunity for the Community Board Managers, Chairmen, Community Board members and the Highways Community Liaison Team to work collaboratively, along with other council services, to explore the root cause of a problem holistically. Community Board funding may be requested to deliver these solutions (subject to meeting funding criteria and priorities). Signposting to other funding sources will also be shared where available. This process can take place at any time during the year.

Once all non-engineered solutions have been explored and evaluated, if it is agreed that an engineered solution is appropriate a brochure providing 'off the shelf' solutions will be available for review. The brochure will include options such as entry gates, dragon's teeth, signage, VAS and bollards. The Highways Community Liaison team will be able to provide advice around which options would be most appropriate for the location knowing the historic highways background, as well as engineering expertise regarding correct identification of the right option for the area. Community Board funding and budget availability should be considered at this point, in addition to other funding options.

Quotes (PIDs) will continue to be produced but these will be a lighter touch to take into account the individual factors for the proposed site and passed back to the requestor directly. Community Boards may consider applications to their small grants for the production of quotes. Following discussion of the quote with the Community Board to ascertain their support for the project, an application will need to be submitted to the Community Board in the same way as a community project; the funding limit for all projects remains at £15,000.

The new way of working will provide for a collaborative approach between those with local knowledge and highways expertise to provide the best value for money solution to the matter.

Projects which are partially complete due to the change in contractor, along with projects where PIDs have already been produced, will be reviewed and re-costed by the end of May 2023. Updated information will be passed back to the Community Board to confirm next steps. All legacy schemes will be completed by 31 March 2024.

*

Action on potholes

We are still focused on tackling the increased number of potholes and road defects this year, caused by the very wet and cold winter. In April our new maintenance contractor BBLP increased crew numbers and fixed 929 potholes, and crews continue to work seven days a week.

We fix the most urgent repairs first and with the warmer spring weather arriving we'll be able to fix more potholes permanently first time, instead of needing to make temporary repairs and return later. Added to this, a new time-saving three-in-one Pothole Pro machine is enabling crews to make more efficient reactive repairs across the county.

Our extended plane and patch programme has begun in earnest, along with planning for the surface dressing, micro-surfacing and major re-surfacing programmes that begin in June.

The annual planned wider maintenance and improvements programme is well under way too – and in fact we are accelerating this work to address the condition of our roads sooner. We have also fixed nearly 100 streetlights, we continue cleaning and fixing Buckinghamshire's 85,000 gullies and we are starting the grass cutting programme.

Please continue to [report any issues through buckinghamshire.gov.uk/FixMyStreet](https://www.buckinghamshire.gov.uk/FixMyStreet)

A new vision for Buckinghamshire Libraries

On 21 March, Cabinet approved a new vision and strategy for Buckinghamshire libraries. Libraries have transformed over recent years to offer a range of services and activities that promote wellbeing, inclusion, and community cohesion.

The vision is for a service that provides welcoming and safe spaces for everyone to access reading, culture and the information and services they need to learn, discover, imagine, and thrive. The priorities for Buckinghamshire libraries are:

- Encouraging culture, reading and learning
- Building stronger communities
- Enabling access, information and inclusion
- Promoting health and wellbeing

More information about the new vision is available on the libraries' membership area of the council website.

<https://www.buckinghamshire.gov.uk/libraries/library-membership/library-policies/our-vision-and-strategy-for-buckinghamshire-libraries/>

Cost of Living funding and focus

The council's Cost of Living and Helping Hand programmes are aimed at reducing the impact of increased financial hardship that Buckinghamshire residents may be experiencing.

On 9 May Cabinet agreed the proposals for how we use the next allocation of the Household Support Fund. This fund is provided by the Department for Work and Pensions, and Buckinghamshire has been allocated £4.8million for this financial year.

Although we are now enjoying the warmer weather, we continue to recognise that times may be hard for some residents. The agreed proposals see a continuation of direct support to those in need through the Helping Hand service, including children during the school holiday periods and providing targeted support to cohorts of individuals who may be finding things difficult. The key aims are to:

- help residents pay for bills, food and other essentials
- provide digital food vouchers for eligible children during school holidays
- support voluntary and community groups in their efforts to help local residents
- provide assistance to other vulnerable groups including pensioners, those with disabilities and care leavers.

Going forwards we will be using this quarterly corporate update to keep you informed of highlights and things you need to know. If you have any questions relating to Cost of Living, Dorota Leclerc remains the person to contact.

View the full report at [Cost of Living Support for Buckinghamshire Residents - HSF4 cabinet report - v3.2 Final.pdf \(modern.gov.co.uk\)](#)

Applications for support can be made at <https://www.buckinghamshire.gov.uk/cost-of-living/>

Local Plan and Local Transport Plan

The council is creating two long-term plans for what Buckinghamshire should be like in 2040 and how this can be achieved:

- The Local Plan for Buckinghamshire – to shape and manage future development across Buckinghamshire
- Local Transport Plan 5 (LTP 5) – to set out the priorities for all types of transport across Buckinghamshire

The council wants to hear views on its draft vision and objectives for these plans which will guide future development and transport in Buckinghamshire in the future.

The new local plan will identify areas suitable for development, while safeguarding those that require careful management. As well as protecting nature and the Green Belt, it will set out key requirements for new developments, encompassing an appropriate mix of housing, land allocation for employment opportunities, and the creation of vibrant living spaces, complete with shops and public areas.

When planning new homes, shops, and places to work, it's essential to ensure that they are well connected to the existing road and public transport networks which is why the council is developing a county-wide local transport plan in parallel with the new local plan.

To have your say on the council's vision and objectives for these plans:

- Complete the [online survey](#)
- Complete and return a printed version of the survey (can be downloaded from the online survey page)
- Email: planningpolicyteam.bc@buckinghamshire.gov.uk
- Write to: Vision and objectives consultation, Planning Policy, Buckinghamshire Council, Queen Victoria Road, High Wycombe, HP11 1BB

If you have any questions about this consultation, please email planningpolicyteam.bc@buckinghamshire.gov.uk or call 0300 131 6000.

Submissions need to be received by midnight on Sunday 4 June 2023.

To keep up to date with the Local Plan for Buckinghamshire, please [register online](#).

Ward boundaries consultation

The Local Government Boundary Commission for England is due to publish its recommendations for the new Buckinghamshire Council ward boundaries at the end of this month.

This is currently expected to include a reduction in the number of councillors from 98 to 97, following the further consultation in the south of the county.

The new boundaries will come into effect at the local elections in May 2025. Find out more at <https://www.lgbce.org.uk/all-reviews/buckinghamshire>

Buckinghamshire Council consultations

Other current consultations and surveys from Buckinghamshire Council are available to view on our website <https://yourvoicebucks.citizenspace.com/>

This page is intentionally left blank